

Disclaimer

This is N-trig Beta driver designed for Windows 8 Developer Preview and Consumer Preview releases.

By installing and/or using this Beta driver, you (the user) are accepting all terms and conditions set forth herein and hereby acknowledges that you are aware of the fact that the Beta driver is still under development and testing, and that N-trig has NOT made the Beta driver generally available as a formal driver endorsed by N-trig.

THE BETA DRIVER IS PROVIDED "AS IS" WITHOUT ANY WARRANTY OF ANY KIND WHATSOEVER. N-TRIG DISCLAIMS ANY AND ALL REPRESENTATIONS OR WARRANTIES OF ANY KIND, WHETHER EXPRESS OR IMPLIED, MADE WITH RESPECT TO THE BETA DRIVER, INCLUDING WITHOUT LIMITATION ANY IMPLIED WARRANTIES OF MERCHANTABILITY OR FITNESS FOR A PARTICULAR PURPOSE;

BY INSTALLING AND/OR USING THE BETA DRIVER ACKNOWLEDGES THAT THE BETA DRIVER MAY HAVE DEFECTS OR DEFICIENCIES, WHICH CANNOT OR WILL NOT BE CORRECTED BY N-TRIG. YOU WILL HOLD N-TRIG HARMLESS FROM ANY CLAIMS BASED ON ANY USE OF THE BETA DRIVER FOR ANY PURPOSES.

N-TRIG WILL NOT BE LIABLE FOR AND YOU SHALL NOT CLAIM AGAINST N-TRIG WITH RESPECT TO ANY DIRECT, INDIRECT, PUNITIVE, SPECIAL, INCIDENTAL OR CONSEQUENTIAL DAMAGE IN CONNECTION WITH OR ARISING OUT OF THE BETA DRIVER, INCLUDING LOSS OF BUSINESS, REVENUE, PROFITS, USE, DATA OR OTHER ECONOMIC ADVANTAGE, HOWEVER IT ARISES, WHETHER FOR BREACH OR IN TORT, EVEN IF N-TRIG HAS BEEN PREVIOUSLY ADVISED OF THE POSSIBILITY OF SUCH DAMAGE.

You may NOT:

- (a) use the Beta driver for commercial use, including, without limitation, integrating same with your product/s and/or distributing it.
- (b) decompile, disassemble, reverse engineer or otherwise attempt to derive the Beta driver's structure, specifications, qualities or source code;

You may, if you wish provide feedbacks with regard to the Beta driver. Any such feedback shall become N-trig's sole property and N-trig may use it in any manner as it shall see fit.

Installation instructions:

1. **IMPORTANT NOTICE:** before updating to windows8, make sure you have latest bundle installed on your windows 7 machine.
This step is mandatory and comes to ensure you are running latest firmware.
Currently, there is no way to update the firmware within windows 8.
2. Download the zip file – based on your system - 32 bit or 64 bit system from:
http://www.n-trig.com/Content.aspx?Page=Downloads_Drivers
3. Unzip the file
4. Run the DPInst.exe as administrator (right click on the file and choose ‘Run as Administrator’)
5. Sometimes the following pop up might appear:



Click on ‘Install using compatibility settings’

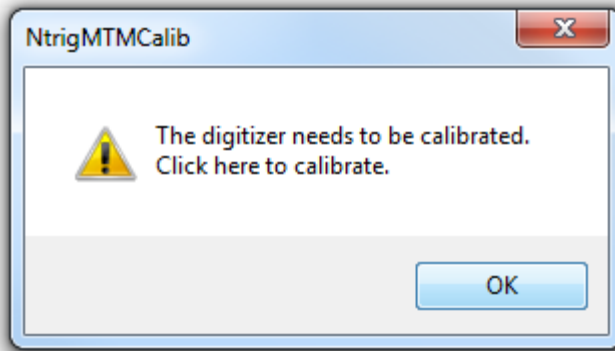
6. Sometimes the following pop up window might also appear:



Click on “Install”.

Calibration Tool

1. This package includes a calibration tool, use it once you are having touch performance problems or if you are observing random clicks.
2. To run the calibration program double click on the “NtrigMTMCalib.exe” file
3. Once pressed the following window will appear:

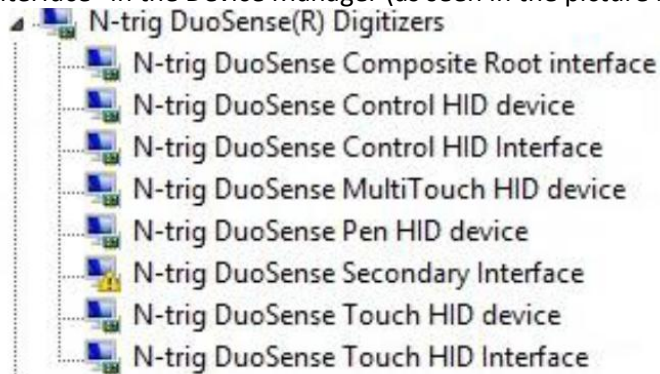


Press on the “OK” button.

4. After pressing on the “OK” please refrain from touching the screen for the whole duration of the calibration (indicated by a window that will pop up).

Known issues

1. On some machines, you might get a yellow bang on “N-trig DuoSense Secondary Interface” in the Device Manager (as seen in the picture below).



This has no effect on touch or pen performance and should not impact system functionality.

2. Sometimes after installation there will be no Pen.
If you observe this, please shut down your machine and power it up again, it should solve the issue.
3. Performance of touch and pen might not be the same as on Windows 7 environment and will require further optimization.
4. If you would like to feedback us about this beta driver, you may send us an email to: esupport@n-trig.com