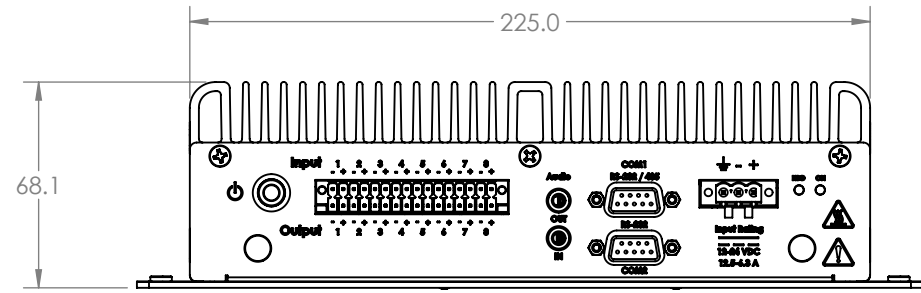
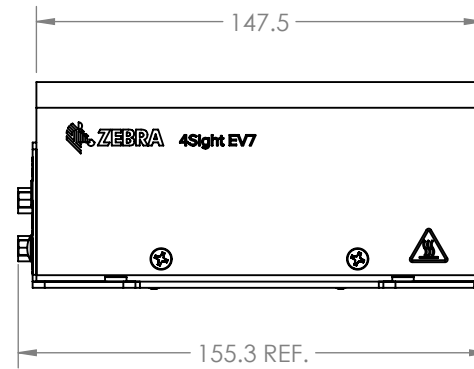


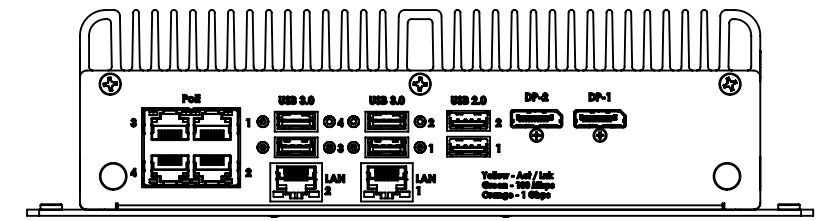
REVISIONS					
REV.	DESCRIPTION	D.O.	CHECKED BY	APPROVED	DATE
P-2	PRELIMINARY	AB	X. XXXX		2023-05-25



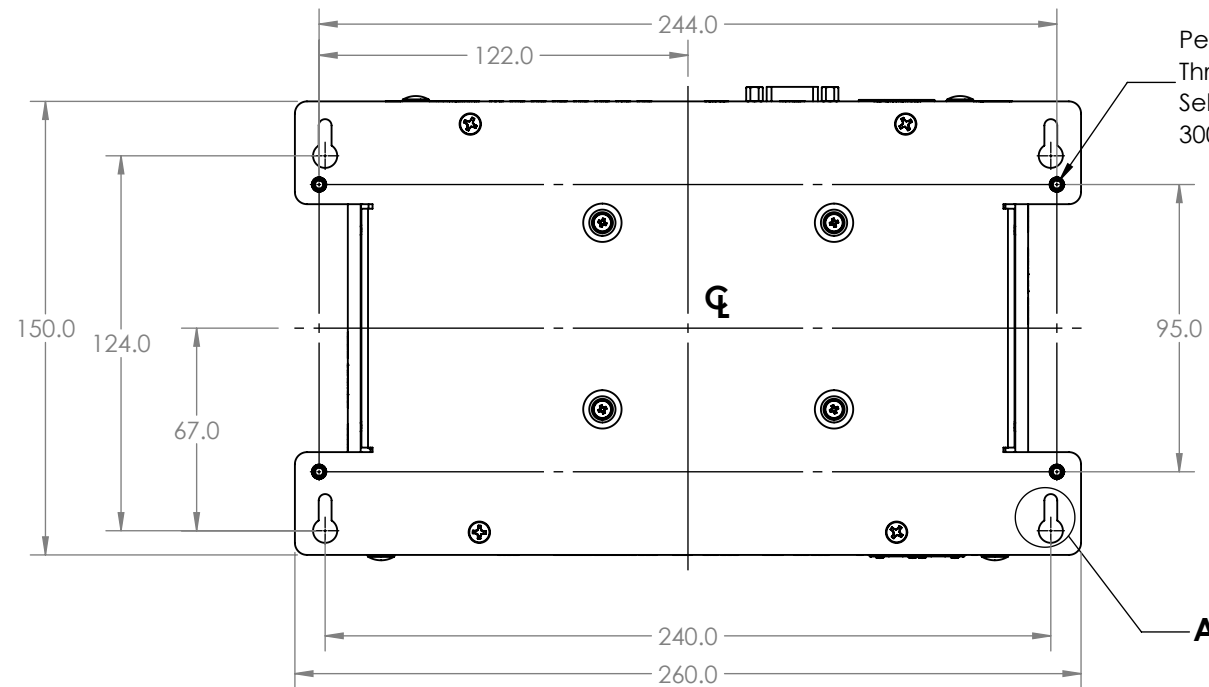
FRONT SIDE VIEW I/O AND POWER



SIDE VIEW

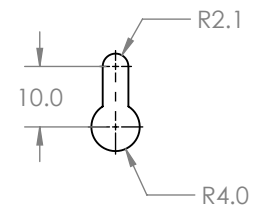


REAR SIDE VIEW CONNECTIVITY AND DISPLAY OUT



BOTTOM VIEW

PennEngineering p/n: CLS-632-1
Thread size: #6-32
Self-Clinching Nuts
300 Series Stainless Steel



**DETAIL A
SCALE 4 : 5**

INTERPRET PER
ASME Y14.5M-1994

QUANTITY	ITEM	DESCRIPTION	MANUFACTURERS / PART No	NOTES
TOLERANCES UNLESS OTHERWISE SPECIFIED		GROUP	THIRD ANGLE PROJECTION	
DIMENSIONS ARE IN : MILLIMETERS [X] INCHES []		IMAGING		
.X	.XX	.XXX	PROJECT	4Sight Ev7
± .3	± .25	± .070	FILENAME	PLA_4Sight Ev7 CSA (2023-05-24).SLRDRW
BREAK SHARPS EDGE		BENDS	DRAWN BY	A. BERGERON
0.38		0.79R	CHECKED BY	X. XXXX
MATERIAL		SIZE	DATE	2023-05-25
FINISH		SCALE	2:5	TITLE
				4Sight Ev7 Embedded System
				XXXX-XX
			DRAWING NO.	XXXX-05-XX
			REV	P-2
			SHEET	1 OF 2

ROHS COMPLIANCE
THIS PART/ASSEMBLY TO COMPLY WITH ZEBRA TECHNOLOGIES MATERIAL CONTENT POLICY NUMBER CPZ-CE-010. ANY MATERIAL OR PROCESS CHANGE AFFECTING COMPLIANCE WITH THIS POLICY MUST BE COMMUNICATED TO AND APPROVED BY ZEBRA TECHNOLOGIES PRIOR TO MAKING THE ACTUAL CHANGE.

CONFIDENTIAL AND PROPRIETARY
THE INFORMATION CONTAINED HEREIN IS THE CONFIDENTIAL AND THE EXCLUSIVE PROPERTY OF ZIH CORP. THIS DOCUMENT, AND THE INFORMATION CONTAINED HEREIN, SHALL NOT BE COPIED, REPRODUCED, PUBLISHED, DISPLAYED OR DISTRIBUTED, IN WHOLE OR IN PART, IN ANY MEDIUM, BY ANY MEANS, FOR ANY PURPOSE WITHOUT THE EXPRESS WRITTEN CONSENT OF ZIH CORP.
© ZIH CORP.2017 ALL RIGHTS RESERVED



THIS DRAWING ON THIS PRINT AND INFORMATION THEREWITH ARE PROPRIETARY TO ZEBRA TECHNOLOGIES AND SHALL NOT BE USED OR DISCUSSED IN WHOLE OR PART WITHOUT ZEBRA TECHNOLOGIES CONSENT.